

PRESS RELEASE

"FOR IMMEDIATE RELEASE"

Madrid, 09th July, 2010

Institute IMDEA Networks reaches out

The Institute IMDEA Networks is taking innovative steps to identify, engage with and attract brilliant young scientists who will help shape the future internet. The Institute is extending its outreach to researchers around the World by using the internet itself as its preferred channel of communication, establishing an active presence on Facebook, Twitter and LinkedIn.

Using these social media sites, the Madrid-based research initiative is seeking to establish an online presence through which to foster relationships with graduate, researcher and scientist communities wherever they may be, providing them with channels for interacting with colleagues, collaborators and the Institute IMDEA Networks itself.



Simple outline of a social network.



One group of particular interest is recently- and soon-to-be-graduated students looking to follow a career in researching the science of networks. Through its presence on these social media sites, Institute IMDEA Networks is promoting its career opportunities to this particular group which is especially active on such sites.

Social computing for scientists

Scientific research is nowadays conducted by communities of researchers that span disciplines, laboratories, organizations, and national boundaries. The Institute's presence in online social networks also serves as a forum to present the results of its latest activities. This strategy supports the Institute's goal of establishing itself at the heart of the global research community. Institute IMDEA Networks is leveraging the power of the social media to extend its outreach and impact.

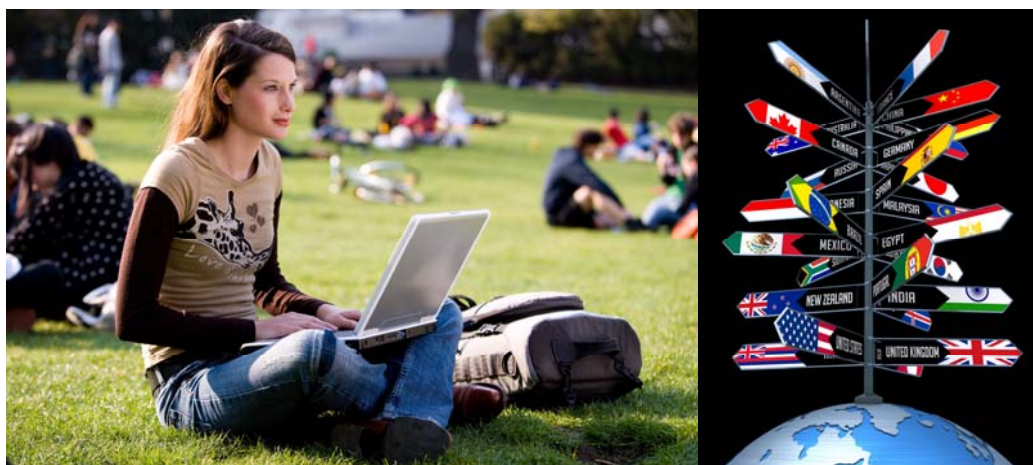
Related links:

[Follows us on Facebook](#)

[Follow us on Twitter](#)

[Join us on LinkedIn](#)

[Subscribe to our News](#)



One group of particular interest is recently- and soon-to-be-graduated students looking to follow a career in researching the science of networks.

-###-



ABOUT IMDEA NETWORKS

IMDEA Networks is an international research institute supported by the Regional Government of Madrid and the European Union. The Institute brings together distinguished and young scientific researchers to develop cutting-edge science and technology in the field of networking. In order to ensure a truly international perspective, the Institute's working language is English. Promoting interdisciplinary collaboration, the Madrid-based Institute works in partnership with leading businesses and scientists from around the globe. By generating new knowledge and understanding through its activities, the Institute supports the continued development of Madrid and Spain as a centre for international scientific and technological research.

www.networks.imdea.org

CONTACT INFORMATION – FOR INFORMATION PURPOSES ONLY

We ask you kindly not to publish the following contact details. Thank you for your cooperation.

If you would like more information about this topic, please call or email:

Contact:

Rebeca De Miguel, Operations Support Manager

Tel: +34 91 481 6977

Email: rebeca.demiguel@imdea.org

IMDEA NETWORKS

Avda del Mar Mediterraneo, 22

28918 – Leganés

Madrid (Spain)

General enquiries:

Tel: +34 91 481 6210

Email: info.networks@imdea.org

Madrid Institute for Advanced Studies in Networks

Avenida del Mar Mediterraneo, 22 – 28918 – Leganes (Madrid) – SPAIN

Tel: +34 91 481 6210 • Fax: +34 91 481 6965 • E-mail: info.networks@imdea.org •

www.networks.imdea.org

Press release

www.networks.imdea.org